

## Technical data

### Air breathers & Filler plugs

#### Metal air breather filter

#### Flow rate up to 1330 l/min

SCS is a range of air breathers for protection of the tank against the solid contamination contained into the air.

They are composed of a spin-on filter can screwed on a connection tube, directly fitted on the tank. They are usually directly fitted on the tank.

#### Available features:

- Weld or flanged connection, for a maximum flow rate of 1415 l/min
- Fine cellulose and microfibre filtration, to get a good cleanliness level into the reservoir

#### Common applications:

- Mobile machines (construction and agriculture machines)
- Industrial equipment

### Flow rate $\Delta p$ 0.02 bar

	Flow rate [l/min]		
	Filtration rating	P10	A03
<b>SCS050</b>	550	515	530
<b>SCS070</b>	550	515	530
<b>SCS100</b>	1415	1300	1330
<b>SCS150</b>	1415	1300	1330

### Materials

Riser: Galvanized steel

### Temperature

From -25 °C to +100 °C

### Weight

SCS050...G1: 0,200 kg  
 SCS050...G2: 0,265 kg  
 SCS100...G1: 0,450 kg  
 SCS100...G2: 0,645 kg

CS/CG050: 0,73 kg  
 CS/CG070: 0,95 kg  
 CS100: 1,3 kg  
 CS150: 1,6 kg  
 CG100: 1,3 kg  
 CG150: 1,6 kg



## Designation & Ordering code

### METAL AIR BREATHER FILTER

Series and size				Configuration example 1 : SCS050 C G2 V P01					
<b>SCS050</b>	<b>SCS070</b>	<b>SCS100</b>	<b>SCS150</b>	Configuration example 2 : SCS150 C G2 A10 V P01					
Connections to the tank									
<b>C</b>	Weld riser								
<b>F</b>	Screwed flange								
Threaded connection		SCS050 - 070		SCS100 - 150					
<b>G1</b>	Connection ISO 228	G 3/4"	G 1 1/4"						
<b>G2</b>	Connection U.S. standard	1" - 12 UNF	1 1/2" - 16 UN						
Filtration rating		Size:	050	070	100	150			
Without filter element			•	•	•	•			
<b>A03</b>	Inorganic microfiber	3 µm	•	•	•	•			
<b>A10</b>	Inorganic microfiber	10 µm	•	•	•	•			
<b>P10</b>	Resin impregnate paper	10 µm	•	•	•	•			
Seals									
<b>A</b>	NBR								
<b>V</b>	FPM								
Execution									
<b>P01</b>	MP Filtri standard								
<b>Pxx</b>	Customized								

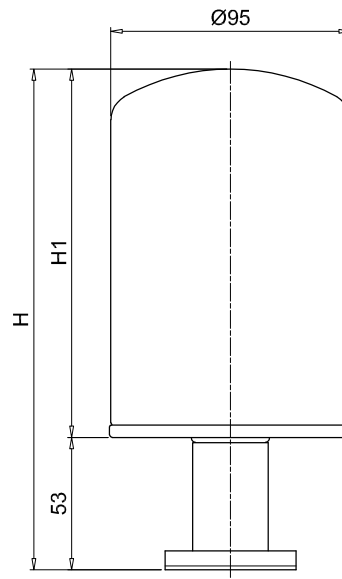
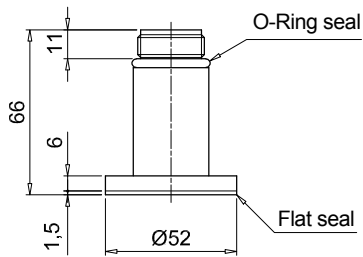
### FILTER ELEMENT

Filter element series		Threaded connection:		Configuration example : CG 150 A10 V P01					
<b>CS</b>	Connection ISO 228	G1	•						
<b>CG</b>	Connection U.S. standard	G2	•						
Filter element size									
<b>050</b>	<b>070</b>	<b>100</b>	<b>150</b>						
Filtration rating									
<b>A03</b>	Inorganic microfiber	3 µm							
<b>A10</b>	Inorganic microfiber	10 µm							
<b>P10</b>	Resin impregnate paper	10 µm							
Seals									
<b>A</b>	NBR								
<b>V</b>	FPM								
Execution									
<b>P01</b>	MP Filtri standard								
<b>Pxx</b>	Customized								

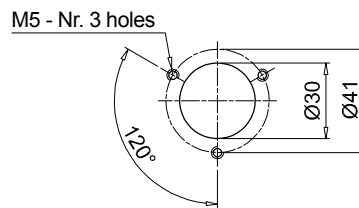
### SCS050-070

#### Screwed flange

Size	H [mm]	H1 [mm]
<b>050</b>	199	146
<b>070</b>	263	210



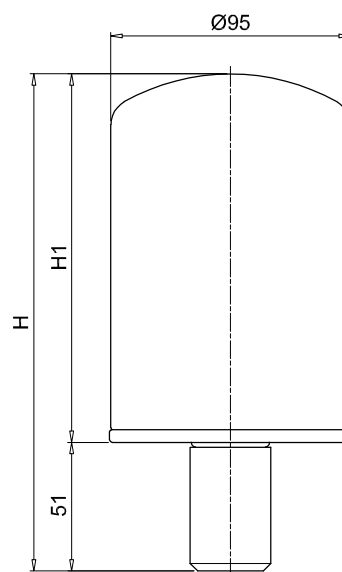
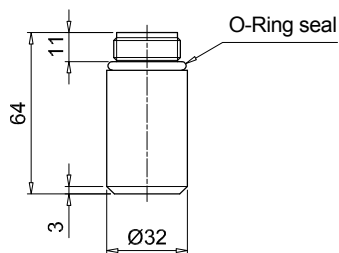
Holes on the tank



### SCS050-070

#### Weld riser

Size	H [mm]	H1 [mm]
<b>050</b>	197	146
<b>070</b>	261	210



## Dimensions

