



Available in three configurations

- A configuration with start / stop differential pressure indicator - visual
- B configuration with start / stop automatic motor cut-out from differential pressure indicator - electrical/visual
- C configuration with start / stop phase inverter automatic motor cut-out from differential pressure indicator - electrical/visual
In Line Contamination Monitor ICM

UFM 91 - 181 mobile filtration units suitable for filling and refilling of filtered hydraulic fluids and lubrication tanks.

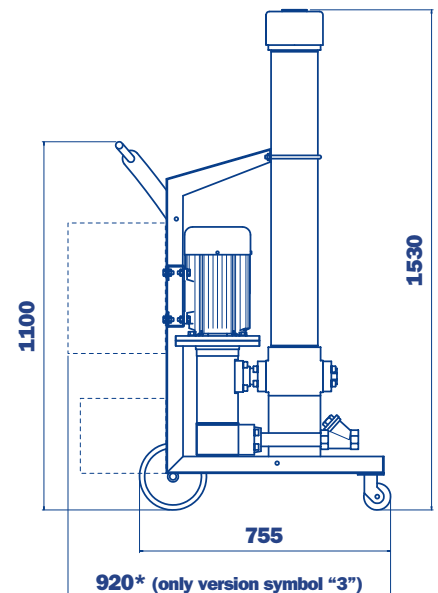
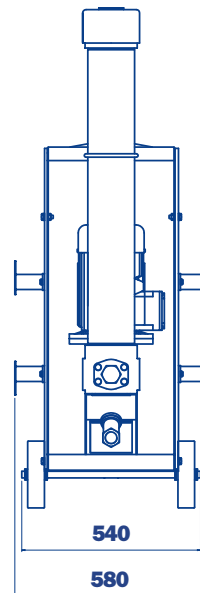
The filter unit connected to off-line to the tank, can be used as a support to the filtration plant on start-up for fast flushing action, either as additional filtration systems with a high incidence of contamination.

- UFM 091 recommended maximum tank volume of 900/1300 L.
- UFM 181 recommended maximum tank volume of 1800/2700 L.
- UFM 919 two-speed electric motor with programmable flow of 90 or 180 l/min.

Possible applications:

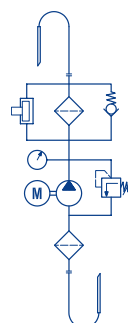
- Low flow rate for filling and refilling of reservoirs with volume less than 1000 liters
- Low-flow filtration for off-line tanks with a volume less than 1000 liters
- Low-flow filtration of oils with high viscosity at low temperatures
- Low flow during start-up for filtration of oils with high viscosity at low temperatures, high flow rate with subsequent increases in temperature increase and viscosity reduction
- High flow rate for filling and refilling tanks with volume greater than 2000 liters
- High flow filter off-line reservoirs with volume greater than 2000 liters

- **Compact size**
- **Easy maintenance**
- **High flow**
- **Reliable**
- **Continue Operation Pressure 10 bar**
- **Absolute filtration**
- **Easy to use**
- **In Line Contamination Monitor**

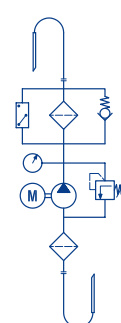


Symbols (see ordering information)

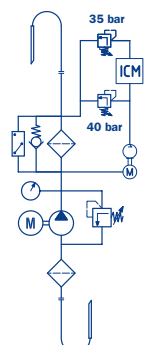
"0"
Symbol



"1"
Symbol



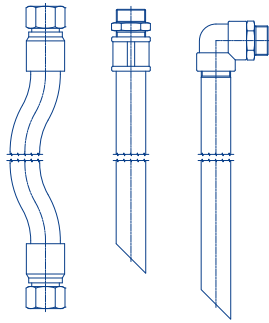
"3"
Symbol



Technical data

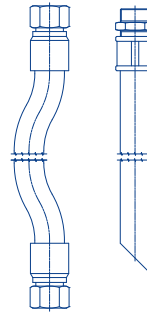
	UFM 091	UFM 181	UFM 919
Pump	Screw pump	Screw pump	Screw pump
Electric Motor	3.7/5 kW 400/230 V three phase 2/4-pole	3.7/5 kW 400/230 V three phase 2/4-pole	3.7/5 kW 400/230 V three phase 2/4-pole
Flow (l/min)	90 l/min - 1450 r.p.m.	180 l/min - 2900 r.p.m.	90 l/min - 1450 r.p.m. / 180 l/min - 2900 r.p.m.
Max. Operation Pressure	10 bar	10 bar	10 bar
Viscosity range	Min. operation 10 cSt Max. operation 600 cSt Max. only for cold start 2000 cSt	Min. operation 10 cSt Max. operation 600 cSt Max. only for cold start 2000 cSt	Min. operation 10 cSt Max. operation 600 cSt Max. only for cold start 2000 cSt
Suction Filter	Type Y filtration 900 µm	Type Y filtration 900 µm	Type Y filtration 900 µm
Fluid Temperature	From -10° to +80°C	From -10° to +80°C	From -10° to +80°C
Ambient Temperature	From -20° to +45°C	From -20° to +45°C	From -20° to +45°C
Protection Class	IP 55	IP 55	IP 55
Seal	NBR	NBR	NBR
Fluid Compatibility	Mineral Oil - Sintetic Oil - Water Glycol	Mineral Oil - Sintetic Oil - Water Glycol	Mineral Oil - Sintetic Oil - Water Glycol
Weight	105 kg.	109 kg.	120 kg.
Equipment	<ul style="list-style-type: none"> Differential Clogging indicator - Visual Differential Clogging indicator - Electrical/Visual In line Particle Counter ICM + Differential Clogging indicator - Electrical/Visual 	<ul style="list-style-type: none"> Differential Clogging indicator - Visual Differential Clogging indicator - Electrical/Visual In line Particle Counter ICM + Differential Clogging indicator - Electrical/Visual 	<ul style="list-style-type: none"> Differential Clogging indicator - Visual Differential Clogging indicator - Electrical/Visual In line Particle Counter ICM + Differential Clogging indicator - Electrical/Visual

Hoses



Suction hose
DN50 length 3000 mm.

Lance
DN50 length 700 mm.
90° - DN40 length 850 mm.



Pressure hose
DN38 length 3000 mm.

Lance
DN40 length 700 mm.

Bypass options - 2 Housing spigot included



Housing spigot
No bypass



Housing spigot
Bypass 3,5 bar

Ordering information - Filter element

Filter element

Absolute filtration
inorganic microfibre

$\beta_{x@} \geq 1000$

Wire mesh element

Nominal filtration

CU 400 6 A01 A N P01

<4

CU 400 6 M25 A N P01

25 μm

CU 400 6 A03 A N P01

5

CU 400 6 M60 A N P01

60 μm

CU 400 6 A06 A N P01

7

CU 400 6 A10 A N P01

10

CU 400 6 A16 A N P01

15

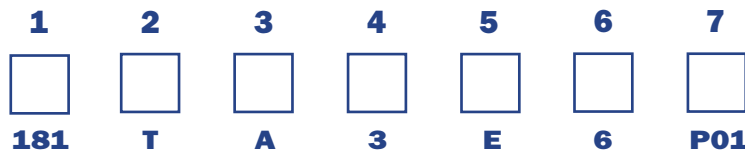
CU 400 6 A25 A N P01

20

Ordering information

UFM

Example: UFM



1 - Flow

- 090 l/min
- 180 l/min
- 090/180 l/min

2 - Electric motor

- Three phase 380 V

3 - Seals

- NBR

4 - Automatic motor cut-out from differential pressure indicator

- Without (only for UFM 091)
- With
- Automatic motor cut-out from differential pressure indicator
Phase inverter
ICM In-Line Contamination Monitor

5 - Filter elements

- Without element

6 - Length filter body

- Standard

7 - Option

- Standard MP Filtri

Filtration elements should be ordered separately