

UFM 051

Mobile filtration unit



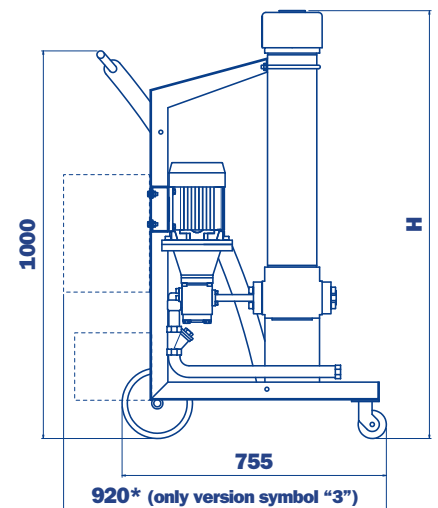
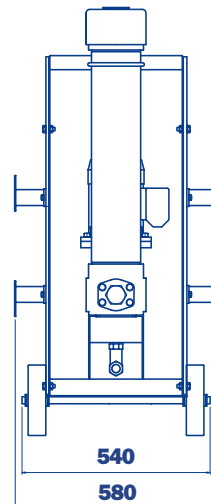
Available in three configurations

- A configuration with start / stop differential pressure indicator - visual
- B configuration with start / stop automatic motor cut-out from differential pressure indicator - electrical/visual
- C configuration with start / stop phase inverter automatic motor cut-out from differential pressure indicator - electrical/visual
In Line Particle Counter ICM

UFM 051 mobile filtration units suitable for filling and refilling of filtered hydraulic fluids and lubrication tanks.

The filter unit connected to off-line to the tank (recommended maximum volume of 500/750 L.), can be used as a support to the filtration plant on start-up for fast flushing action, either as additional filtration systems with a high incidence of contamination.

Continued use is recommended for the version with three phase electric motor.



UFM 051

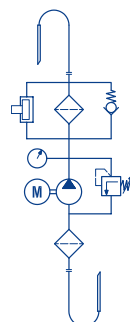
Length filter body
(see ordering information)

Length Filter	H mm
5	1230 Standard
6	1530 Special

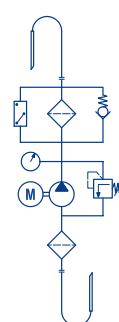
- **Compact size**
- **Continue Operation Pressure 10 bar**
- **Easy to use**
- **Easy maintenance**
- **Reliable**
- **Absolute filtration**
- **In Line Contamination Monitor**

Symbols (see ordering information)

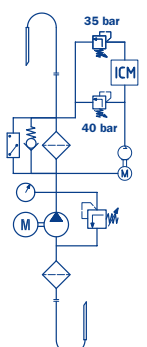
"0"
Symbol



"1"
Symbol



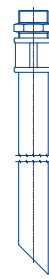
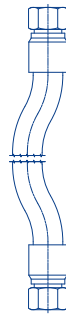
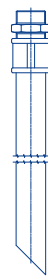
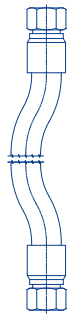
"3"
Symbol



Technical data

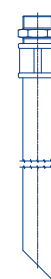
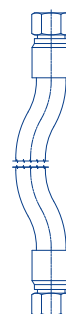
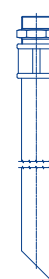
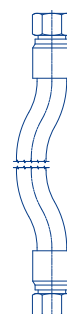
	Without "ICM"	With "ICM"
Pump	Gear pump	Gear pump
Electric Motor	1,5 Kw 230 Volt single phase electric motor 1,5 Kw 400/230 Volt three phase electric motor	- 1,5 Kw 400/230 Volt three phase electric motor
Flow (l/min)	50 l/min - 1450 r.p.m.	40 l/min - 1450 r.p.m.
Max. Operation Pressure	10 bar	10 bar
Viscosity range	Min. operation 10 cSt Max. operation 300 cSt Max. only for cold start 800 cSt	Min. operation 10 cSt Max. operation 300 cSt Max. only for cold start 800 cSt
Suction Filter	Type Y filtration 400 µm	Type Y filtration 400 µm
Fluid Temperature	From -10° to +80° C	From -10° to +80° C
Ambient Temperature	From -20° to +45° C	From -20° to +45° C
Protection Class	IP 55	IP 55
Seal	NBR	NBR
Fluid Compatibility	Mineral Oil & Sintetic Oil - Other on request	Mineral Oil & Sintetic Oil - Other on request
Weight	70 kg.	70 kg.
Equipment	<ul style="list-style-type: none"> • Differential Clogging indicator - Visual • Differential Clogging indicator - Electrical/Visual • - 	<ul style="list-style-type: none"> • - • Differential Clogging indicator - Electrical/Visual • In line Particle Counter ICM + Differential Clogging indicator - Electrical/Visual

Hoses



Suction hose
DN32 length 3000 mm.
Lance
DN40 length 700 mm.

Pressure hose
DN25 length 3000 mm.
Lance
DN30 length 700 mm.



Suction hose
DN25 length 3000 mm.
Lance
DN30 length 700 mm.

Pressure hose
DN25 length 3000 mm.
Lance
DN30 length 700 mm.

Bypass options - 2 Housing spigot included



Housing spigot
No bypass



Housing spigot
Bypass 3,5 bar

Ordering information - Filter element

Length 5 Standard

Filter element

Absolute filtration inorganic microfibre	$\beta_{x@} \geq 1000$	Wire mesh element	Nominal filtration
CU 400 5 A01 A N P01	<4	CU 400 5 M25 A N P01	25 μ m
CU 400 5 A03 A N P01	5	CU 400 5 M60 A N P01	60 μ m
CU 400 5 A06 A N P01	7		
CU 400 5 A10 A N P01	10		
CU 400 5 A16 A N P01	15		
CU 400 5 A25 A N P01	20		

Length 6 Special

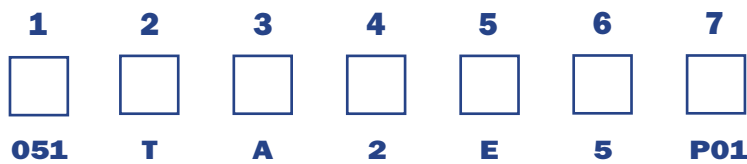
Filter element

Absolute filtration inorganic microfibre	$\beta_{x@} \geq 1000$	Wire mesh element	Nominal filtration
CU 400 6 A01 A N P01	<4	CU 400 6 M25 A N P01	25 μ m
CU 400 6 A03 A N P01	5	CU 400 6 M60 A N P01	60 μ m
CU 400 6 A06 A N P01	7		
CU 400 6 A10 A N P01	10		
CU 400 6 A16 A N P01	15		
CU 400 6 A25 A N P01	20		

Ordering information

UFM

Example: UFM



1 - Flow

051 50 l/min

2 - Electric motor

M Single phase 220 V
T Three phase 380 V

3 - Seals

A NBR

4 - Automatic motor cut-out from differential pressure indicator

0 Without
1 With
3 Automatic motor cut-out from differential pressure indicator
Phase inverter
ICM Contamination Monitor
Only with electric motor three phase
Flow rate 40 l/min

5 - Filter elements

S Without element

6 - Length filter body

5 Standard
6 Special

7 - Option

P01 Standard MP Filtri

Filtration elements should be ordered separately