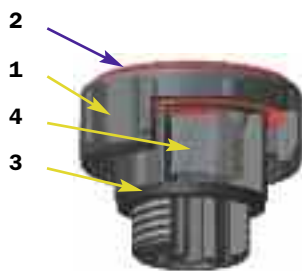
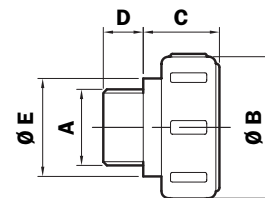


## Dimensions

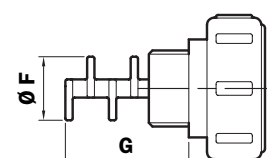
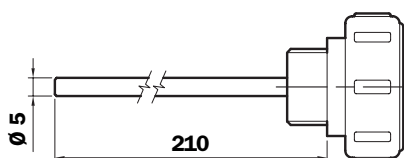


TSD\*\*\*\*S



TSD\*\*\*\*A

TSD\*\*\*\*F



**TSD (Materials)**

- 1 - Body: Nylon
- 2 - Cover: Nylon
- 3 - Seal: NBR
- 4 - Filter: Galvanised steel
- 5 - Anti-splash feature: Nylon
- 6 - Dipstick: Phosphated Steel

**Quantity per pack  
Number of Parts**

**TSD** 25

Size	A	Ø B	C	D	Ø E	Ø F	G
<b>G16</b>	G 3/8"	35	21	10	23	13,5	36
<b>G20</b>	G 1/2"	39	21	11	27	17,5	36
<b>G26</b>	G 3/4"	45	21	12	33	23,5	37
<b>G33</b>	G 1"	51	24,5	13	39	29,5	44
<b>G42</b>	G 1 1/4"	66	29,5	14	54	38	47
<b>G48</b>	G 1 1/2"	66	29,5	14	54	38	47

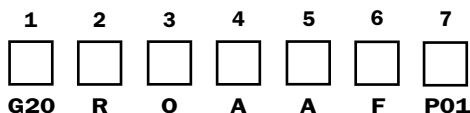
**N.B.** Seals thickness 2 mm.  
Recommended tightening torque 10+15 Nm.

## Ordering information

**Filler cap**

**TSD**

Example: TSD



**1 - Size**

<b>G16</b>	G 3/8"
<b>G20</b>	G 1/2"
<b>G26</b>	G 3/4"
<b>G33</b>	G 1"
<b>G42</b>	G 1 1/4"
<b>G48</b>	G 1 1/2"

**2 - Cover colour**

<b>R</b>	Red
<b>Y</b>	Yellow

**3 - Cover wording**

<b>N</b>	Neutral
<b>O</b>	Oil
<b>G</b>	Gasoil

**4 - Seal**

<b>A</b>	NBR
----------	-----

**5 - Filter element**

<b>A</b>	Steel (excepté "Gasoil")
<b>O</b>	Without

**6 - Accessories**

<b>S</b>	Without
<b>A</b>	Standard dipstick
<b>F</b>	Anti-splash feature

**7 - Options**

<b>P01</b>	MP Filtri standard
------------	--------------------